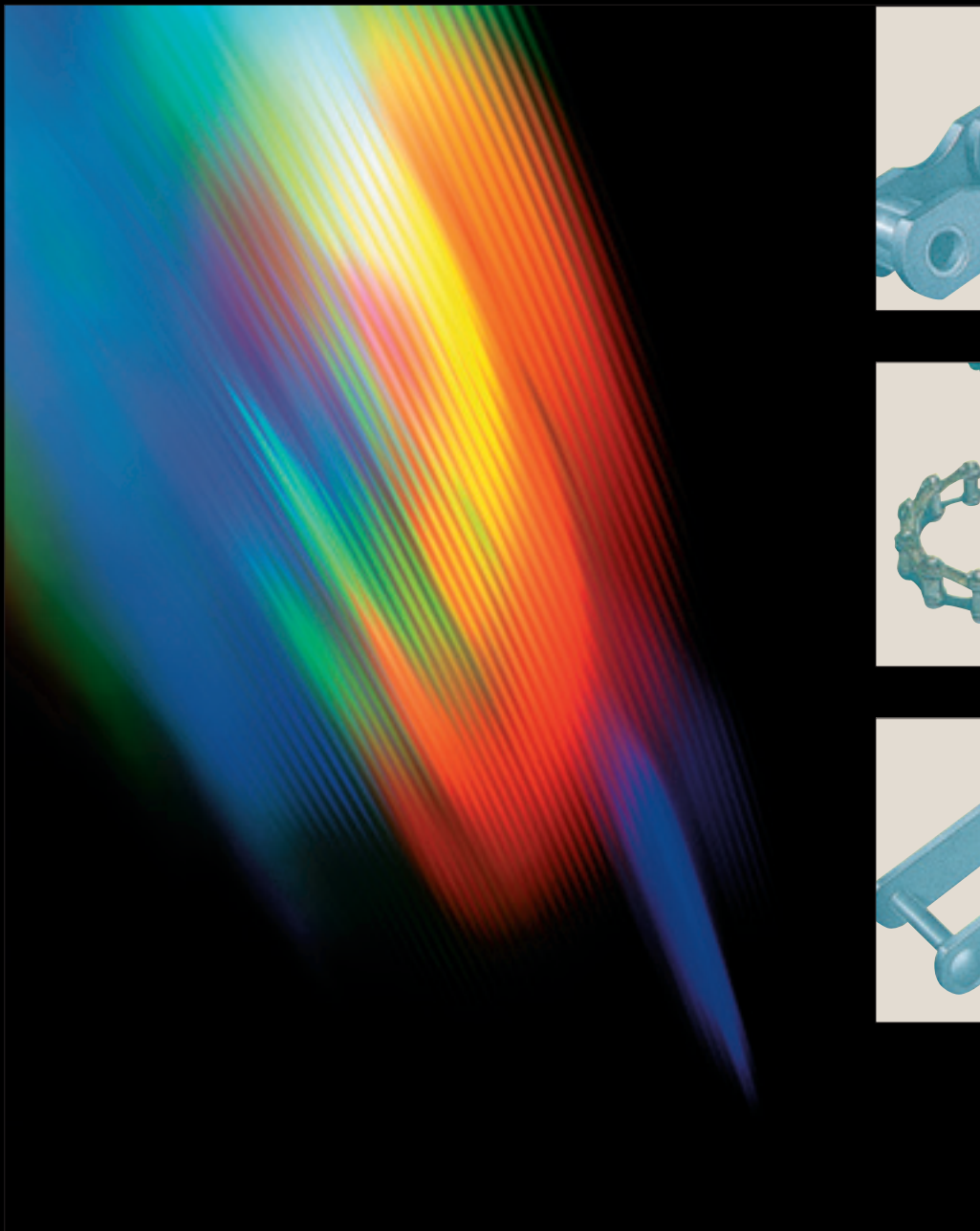


# CHAIN DIGEST



SENQCIA CORPORATION

As a comprehensive chain manufacturer, we produce Roller Chains, Conveyor Chains, Cast Chains and many other types of chains.

We provide a full range of manufacturing processes from machining through heat treatment for assembly based on our experience and technologies accumulated over more than 100 years.

We are proud that our products keep contributing to industrial progresses in Japan and abroad.



## CAUTION

For use of SENQCIA Products, please check our catalogues.

Errors or shortcomings in selection, handling and maintenance can cause major accidents, including chain breakage and conveyor damage.

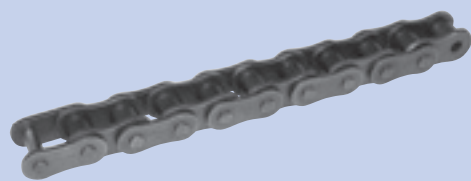
Please refer to our catalogues, the relevant design documents, selection criteria or instruction manuals.

If any points are unclear, please contact the manufacturer for clarification.

## Roller Chains

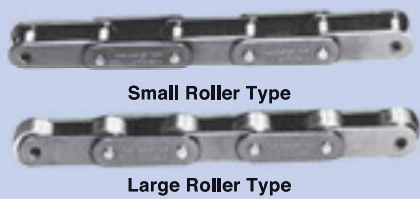
### Standard Roller Chains

Standard ANSI/BS Roller Chains adopt Solid Bushing & Roller. It has cylindrical inside and outside bushing walls resulting in full contact to disperse bearing pressure. Less pressure ensures excellent wear resistance.



### Double Pitch Roller Chains

Small roller chains (C2040~C2160H) have double the pitch with the same pin, bush and roller measurements as standard roller chains, while Large roller chains (C2042~C2162H) have double the external diameter of rollers.



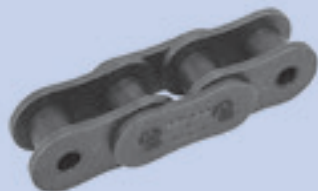
### Heavy Duty Drive Chains

Heavy Duty Drive Chains are suitable for power transmission in machines which are subjected to extremely large forces and shocks. Heat-treated special steel is used for their main components and they are machined to high precision. These are offset type chains which give them superior impact resistance.



### Super Roller Chains

Super Roller Chains are upgraded to a high degree over existing ANSI standard roller chains.



## Conveyor Chains

### Standard Conveyor Chains

These chains are assembled from precisely-fitted links, bushes and pins, each made of carbon steel or hardened steel, to give accurate dimensions. Rollers are available in R, F or S roller types to suit different applications.



### HB type Bushed Chains

These chains have no rollers, and are used in trolley conveyors and log haul conveyors.



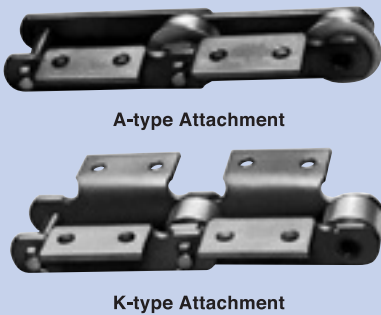
### Steel Block Chains

These chains incorporate precisely-machined steel blocks. They are used for carrying heavy items in locations such as steelworks, as well as in applications such as draw benches and sluice gates.



### Conveyor Chains with Attachments

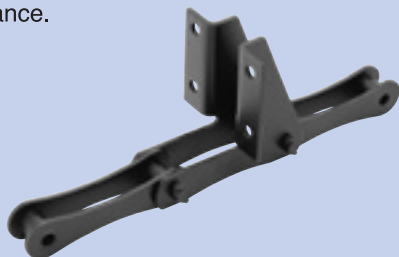
Various attachment can be installed depending on the applications.



## Water Treatment Chains

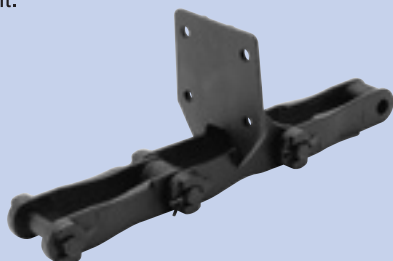
### ■ SAV Stainless Steel Chains

These chains are mainly used for agitation of sludge in sewage treatment works. They are made of stainless steel for superior corrosion and wear resistance.



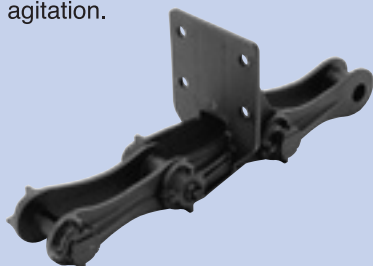
### ■ TAW Pintle Chains

These chains offer improved wear resistance. There are 730TAW and S730TAW types for use in water treatment.



### ■ HEP type Plastic Chain

We used our wide-ranging expertise from conventional metal chains to develop this specialized chain, made of engineering plastic, for sludge agitation.



### ■ Hinotch Chain

This chain is plastic sludge collector chain having higher wear resistance by spreading engaged points in design.



## Malleable Chains

### ■ Detachable Chains

These chains can be detached easily at any point, and their structures are very easy to handle. They run smoothly, with little rusting, even in corrosive environments.



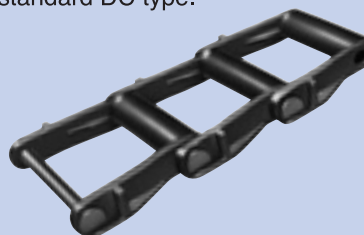
### ■ Pintle Chains

The barrel and link are a single casting, and the chain is assembled by inserting carbon steel pins. The increased strength, relative to detachable chains allows a wider range of applications.



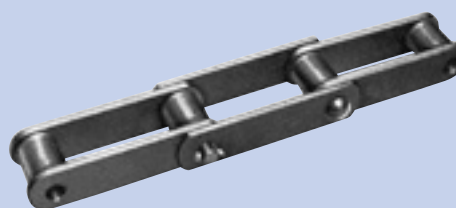
### ■ Drag Chains

A simple and sturdy structure, making a wide and heavy chain that can carry rough and hard materials. The SD type has better wear resistance than the standard DC type.



### ■ Combination Chains

Combination chains are comprised of cast blocks and steel plate links, and are used in various applications.

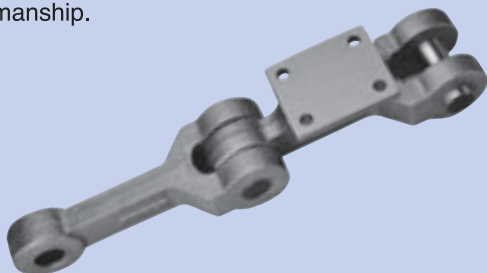




## For other Industries

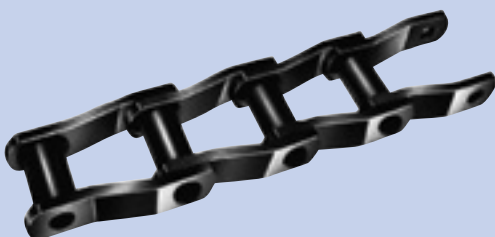
### ■ Intermediate Carrier Chain

These chains are used for Sugar Industry. We can offer various types of chains with good workmanship.



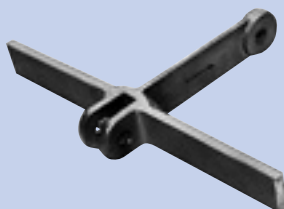
### ■ Welded Chains

These chains have welded structure, in which the barrels are welded to the link plates.



### ■ Case Conveyor Chains

These chains are used in case conveyors, and we offer various attachments to suit their applications. Suitable materials can be offered depending on the applications.



## For Special Applications

### ■ Freedom Series Self-Lubricating Chains

Freedom Series Self-Lubricating Chains perform well in the application without additional lubrication because of oil impregnated sintered steel bushing. This chain is ideal for the industries where cleanliness is critical.



### ■ O-ring Chains

O-ring Chains are equipped with O-rings to prevent the loss of oil coverage. This chain is ideal for the industries where it is difficult to lubricate the chain.



### ■ Stainless Steel Roller Chains

Stainless steel roller chain is manufactured of class 300 stainless steel to ANSI/BS dimensional specifications. This chain is ideal for water, highly acidic or alkaline locations, or very high or low temperature where resistance to corrosion and heat is a requirement.



### ■ Corrosion Resistant Roller Chains

Corrosion Resistant Roller Chain is manufactured by applying nickel plating or molybdenum coating or bonderizing to ANSI/BS standard roller chains and double-pitch roller chains. They provide superior corrosion resistance.



## For Special Applications

### ■ Hollow Pin Chains

These chains are made with special hollow pins, allowing mounting of various types of attachments. They are indicated by the “HP” suffix on the chain number.



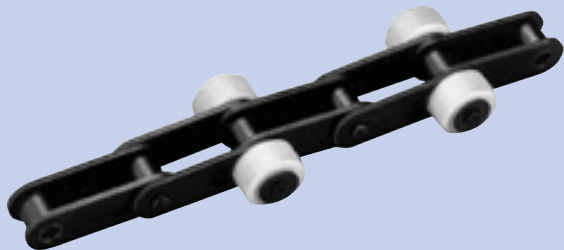
### ■ Side Bow Chains

Pin-to-bushing clearance is much greater than in standard roller chains, and this, plus the clearances between inner and outer links, enables the chain to be used while bowed transversely.



### ■ Side Roller Chains

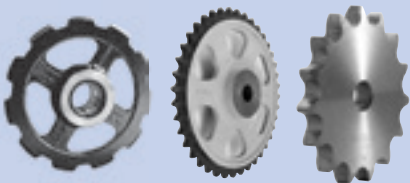
These chains are standard roller chains or double pitch roller chains with side rollers attached to one or both sides, in parallel or staggered patterns. Plastic rollers are used to reduce noise.



## Chain Accessories

### ■ Sprocket wheel

A variety kinds of sprocket wheels are available, such as sprocket wheels for power transmission roller chains, malleable chains and conveyor chains. The chains are driven smoothly with little wear and with small power consumption due to Sprocket Wheel with utmost precision in dimension and high resistance to abrasion.



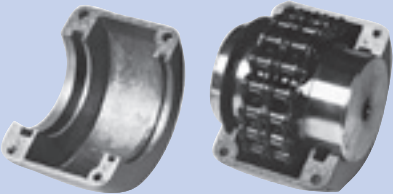
### ■ Snap Idle

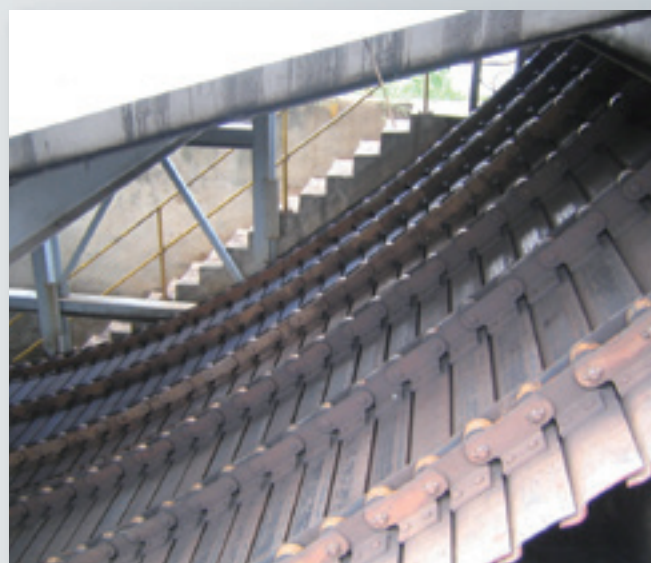
Snap Idle has completely different structure from conventional chain tensioner in its feature of easy set-up and maintenance.



### ■ Chain Coupling

Chain Coupling consists of power transmission roller chains and sprocket wheels. Casing is made of special aluminium with resistance to rapid rolling and oil spill.







# PRODUCTS & TECHNOLOGY

## Roller Chains

- Transmission Roller Chains
- Stainless Steel Roller Chains
- Transmission Double Pitch Roller Chains
- Heavy Series Roller Chains
- Super Roller Chains
- Heavy Duty Drive Chains
- Corrosion Resistant Roller Chains
- Freedom Series Self-Lubricating Chains
- Roller Chains with Special attachment
- Side Bow Chains
- O-ring Chains
- Hollow Pin Chains

## Conveyor Chains

- Standard Conveyor Chains
- HB Type Bushed Chains
- Double Pitch Roller Chains for Conveyor Use
- Steel Block Chains
- Water Treatment Steel Chains
- Sugar Chains
- Case Conveyor Chains

## Malleable Chains

- Detachable Chains
- Pintle Chains
- Drag Chains
- Combination Chains
- Cast Steel Chains

## Chain Accessories

- Sprocket Wheels
- Snap Idle
- Chain Couplings

## Works

- Repair Works

## Manufacturing and Sales Systems

- Raised Floor Systems
- Structural Systems
- Rooftop Systems

## SENQCIA CORPORATION

<http://www.senqcia.com/>  
Email: [kokusai@senqcia.com](mailto:kokusai@senqcia.com)

**Head Office** Shingu Building 4-2, Toyo 2-chome, Koto-ku, Tokyo  
135-8363, Japan  
Phone: +81-3-3615-5421  
Facsimile No.: +81-3-3615-5934

**Distributor**